

MUSIC REVIEW LESSONS



A comprehensive series of review lessons
in music theory, ear training, and music history
for the piano student

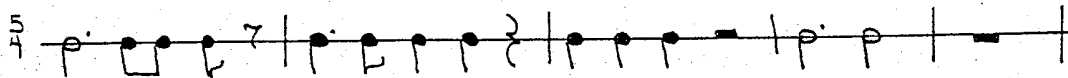
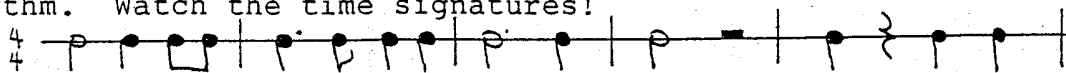
For classroom or studio use

designed and prepared by
Dr. Susan M. Tusing

- | | |
|---|-----------------------------------|
| <input type="checkbox"/> Preparatory A | <input type="checkbox"/> Level 5 |
| <input type="checkbox"/> Preparatory B | <input type="checkbox"/> Level 6 |
| <input type="checkbox"/> Level 1 | <input type="checkbox"/> Level 7 |
| <input checked="" type="checkbox"/> Level 2 | <input type="checkbox"/> Level 8 |
| <input type="checkbox"/> Level 3 | <input type="checkbox"/> Level 9 |
| <input type="checkbox"/> Level 4 | <input type="checkbox"/> Level 10 |

LESSON ONE

Write in the beats (such as 1 2 3 4, etc.) below the given rhythm. Watch the time signatures!



Write a rest for the answer of each addition or subtraction problem. (For example, $\text{quarter} + \text{quarter} = \text{half}$)

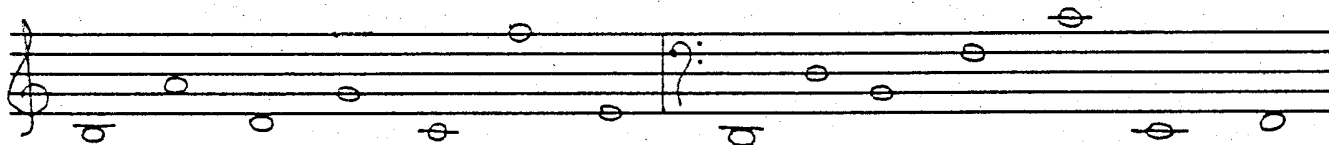
$\text{quarter} + \text{quarter} =$

$\text{half} + \text{half} =$

$\text{quarter} + \text{quarter} =$

$\text{half} - \text{quarter} =$

Give the letter name of each note on the staff below. Be sure to watch the clefs!



Name the notes of the pentascales listed below.

C MINOR _____

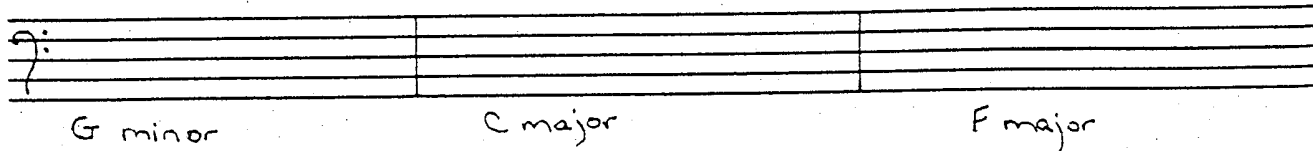
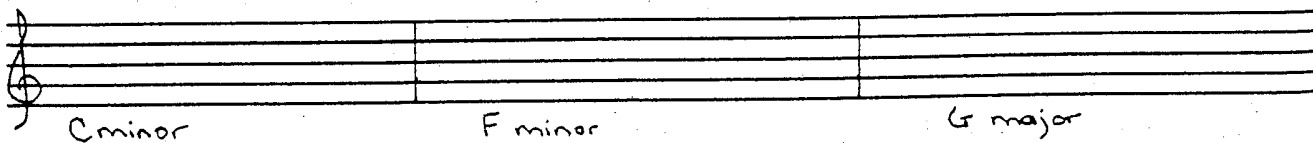
G MAJOR _____

F MINOR _____

F MAJOR _____

G MINOR _____

Write the correct pentascales on the staves below. Use quarter notes.



Match the definition with the correct term.

- | | | | |
|----------|---|-------|-------------|
| <u>A</u> | ff, a dynamic marking indicating to play "very loud." | _____ | BINARY FORM |
| <u>B</u> | pp, a dynamic marking indicating to play "very soft." | _____ | FORM |
| <u>C</u> | the rate of speed of a composition | _____ | FORTISSIMO |
| <u>D</u> | a composition in two sections | _____ | PIANISSIMO |
| <u>E</u> | the structure/design of a piece. | _____ | TEMPO |

Ear Training

In each example, your teacher will play two rhythmic patterns. Circle the pattern you hear.

1.	or
2.	or
3.	or

Ear Training

In each example, two notes will be played. Circle the interval you hear.

- | | | | | | | | | |
|----|-----|-----|----|-----|-----|----|-----|-----|
| 1. | 2nd | 3rd | 2. | 3rd | 5th | 3. | 3rd | 4th |
|----|-----|-----|----|-----|-----|----|-----|-----|

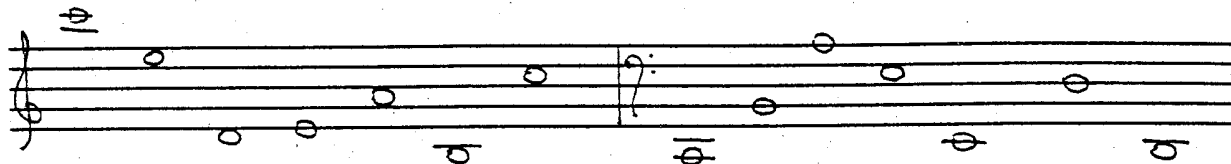
Ear Training

For each example, a short musical example will be played. Do you hear the music crescendo (\blacktriangleleft) or decrescendo (\blacktriangleright)?

- | | | |
|----|----|----|
| 1. | 2. | 3. |
|----|----|----|

LESSON TWO

Give the letter name of each note on the staff below.
Be sure to watch the clefs!



Draw the symbol for each item below.

___ fortissimo

___ pianissimo

___ triplet (eighth notes)

___ dotted half rest

Identify each interval below (harmonic M3, melodic P1, etc.).



Name the notes of the pentascales listed below.

C MAJOR _____

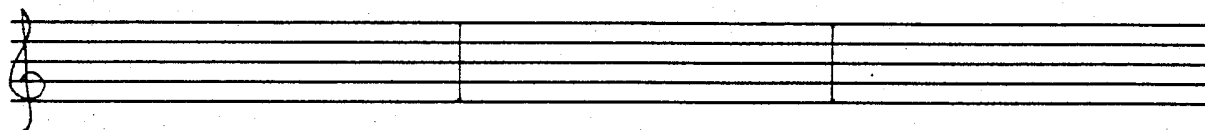
G MINOR _____

F MAJOR _____

F MINOR _____

G MAJOR _____

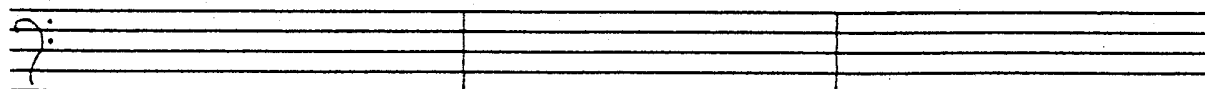
Write the correct pentascales on the staff below.
Use whole notes.



F major

C major

G minor



F minor

G major

C minor

Arrange the following dynamic signs from loudest to softest.

pp f ff mp p mf

Name the key signatures below.

Identify the chord progressions written on the staves below.
(C major, F minor, etc.)

Write the correct chord progressions in whole notes on the staff below.

G: i V₇ i F: I V₇ I c: i V₇ i

Add the time signatures to the rhythmic examples below.

Name the notes of the triads listed below.

C MINOR _____

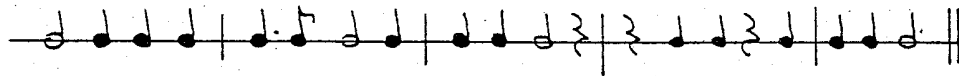
G MAJOR _____

F MINOR _____

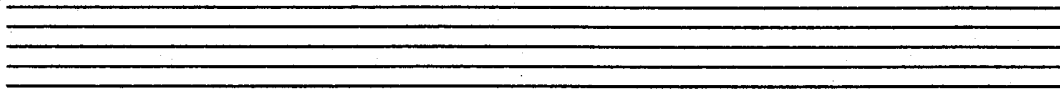
F MAJOR _____

G MINOR _____

Add the time signatures to the rhythmic examples below.



On the staff below, write 4 sets of triplet eighth notes. Watch the direction of the stems!



What do each of the following musical terms tell you to do? Be careful! Their meanings are very similar!

D.C. al Fine _____

D.S. al Fine _____


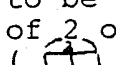
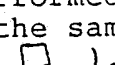
D.C. al Coda _____

D.S. al Coda _____

Arrange the following dynamic signs from softest to loudest.

pp f ff mp p mf

Match the definition with the correct term.

- | | | |
|--|-------|---------------------|
| <u>A</u> allegro, andante, and moderato. | _____ | ROOT POSITION TRIAD |
| <u>B</u> the fourth degree of the scale | _____ | SUBDOMINANT |
| <u>C</u> a composition in three sections of which the third is an exact (ABA) or varied (ABA') repetition of the first. | _____ | TEMPOS |
| <u>D</u> a triad build in 3rds, with its name on bottom (lowest note) | _____ | TERNARY FORM |
| <u>E</u> () , a group of 3 notes to be performed in place of 2 of the same kind. ( = ). | _____ | TRIPLET |

Ear Training

For each example, a short musical example will be played. Do you hear the music crescendo (\langle) or decrescendo (\rangle)?

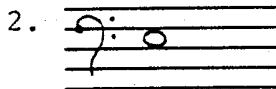
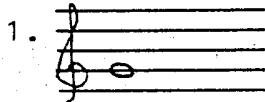
1.

2.

3.

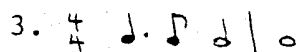
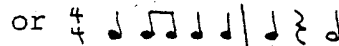
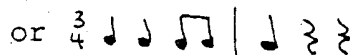
Ear Training

In each example, two notes will be played. The 1st note is given. Write a whole note for the 2nd note.



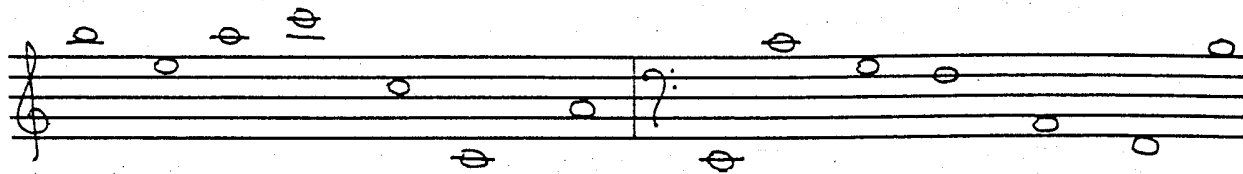
Ear Training

In each example, your teacher will play two rhythmic patterns. Circle the pattern you hear.

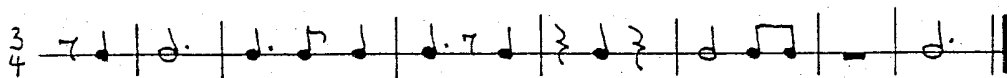
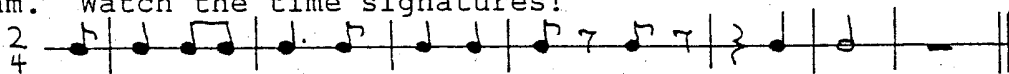


LESSON THREE

Give the letter name of each note on the staff below.
Be sure to watch the clefs!



Write in the beats (such as 1 2 3 4, etc.) below the given rhythm. Watch the time signatures!



Write a note for the answer of each addition or subtraction problem. (For example, $d \cdot + d = o$)

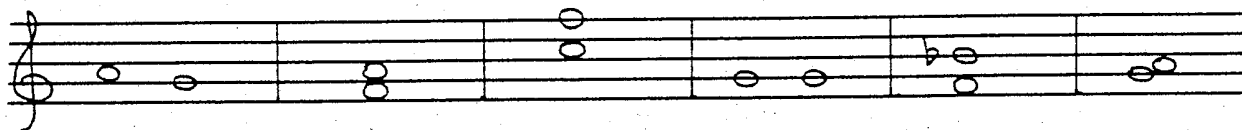
$$o + d =$$

$$\} + \gamma =$$

$$d + d =$$

$$o - d =$$

Identify each interval below (harmonic M3, melodic P1, etc.)



On the staff, write the note that is the correct interval above the given note.



M2

P4

P5

P5

P1

M3

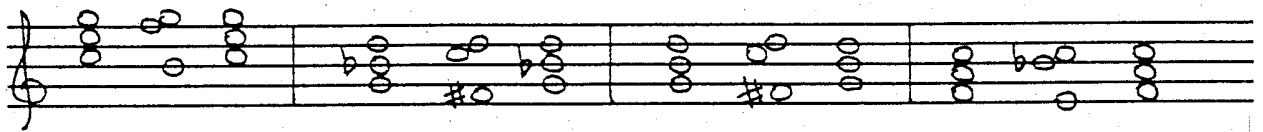
Identify the pentascales below (G minor, F major, etc.).



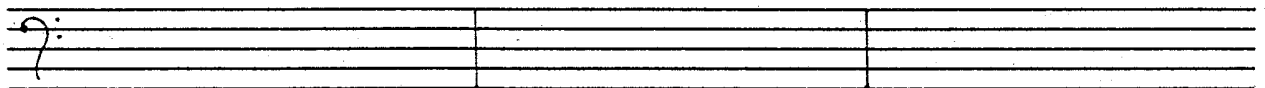
Name the key signatures below.



Below each chord progression, write the correct Roman numerals.

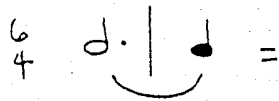


Write the correct chord progressions in whole notes on the staff below.



C: I V₇ I f: i V₇ i G: I V₇ I

Write the number of beats for each pair of tied notes below.



Name the notes of the triads listed below.

C MAJOR _____

F MAJOR _____

F MINOR _____

G MAJOR _____

G MINOR _____

Write the correct triads on the staff. Use whole notes.

C major F minor G major F major C minor G minor

Write the correct chord progressions in whole notes on the staff below.

C: I V₇ I f: i V₇ i F: I V₇ I

Match the definition with the correct term.

- | | |
|---|--------------------------|
| <u>A</u> closing section of a piece; a few measures added at the end of a piece to give it a more final ending. | _____ ALLEGRO |
| <u>B</u> song form, minuet and trio, scherzo, rondo, waltz, sonata-allegro (sonata, sonatina, symphony, concerto) | _____ ANDANTE |
| <u>C</u> a happy, fast speed | _____ CODA |
| <u>D</u> a moderate (medium) speed | _____ MODERATO |
| <u>E</u> a comfortable walking speed | _____ TERNARY FORM TYPES |

Write a brief definition for each of the following terms.

triplet _____

root position triad _____

subdominant _____

tempo _____

tempo (examples) _____

Ear Training

In each example, two notes will be played.
Circle the interval you hear.

1. 2nd 5th 2. 4th 5th 3. 2nd 4th

Ear Training

In each example, your teacher will play a rhythmic pattern.
On the staff write the rhythm you hear.

1. _____

_____ 2. _____

3. _____

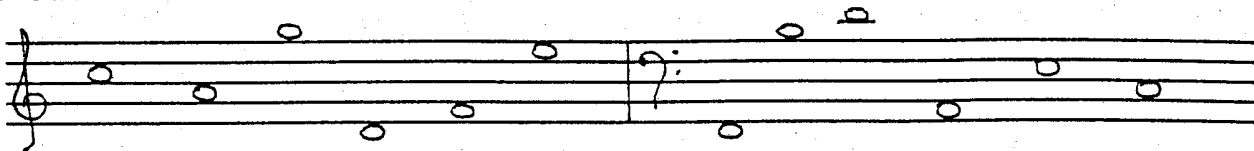
Ear Training

Circle the chord progression below that is played.

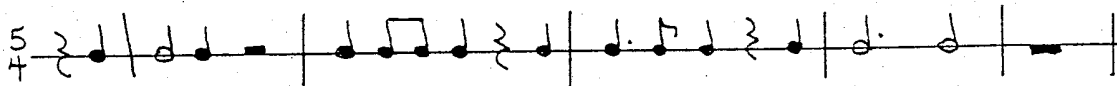
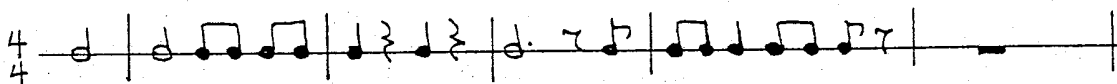
1. I V7 I 2. I V7 I 3. I V7 I
or or or
i V7 i i V7 i i V7 i

LESSON FOUR

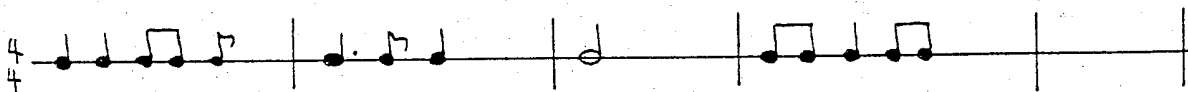
Give the letter name of each note on the staff below.
Be sure to watch the clefs!



Write in the beats (such as 1 2 3 4, etc.) below the given rhythm. Watch the time signatures!



Each of the measures below is incomplete.
Fill in one rest in each measure to make it complete.



Write a note for the answer of each addition or subtraction problem. (For example, $d \cdot + d \cdot = o$)

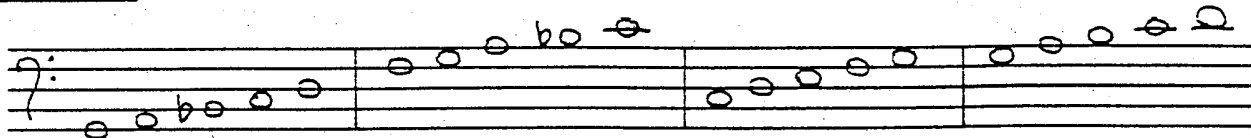
$$d \cdot + \} =$$

$$d \cdot - d \cdot =$$

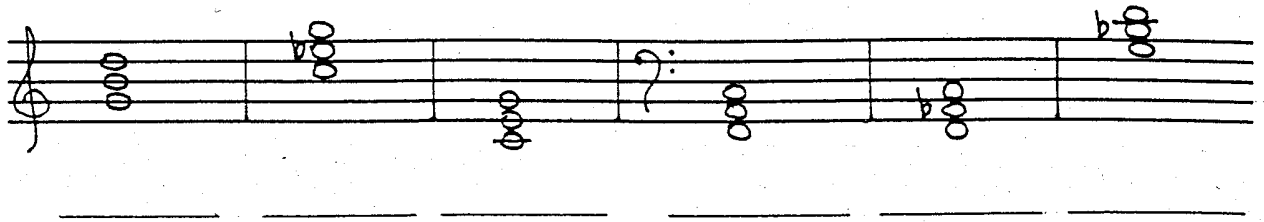
$$\} \cdot + d \cdot =$$

$$o - d \cdot =$$

Identify the pentascales below (G minor, F major, etc.).



Identify the triads written on the staves below.
 (C major, F minor, etc.)

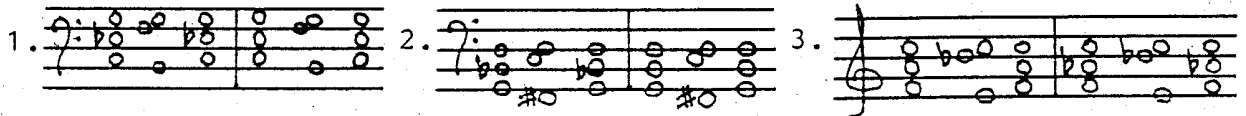


Write a brief definition for each of the following terms.

- allegro _____
- _____
- andante _____
- _____
- fortissimo _____
- _____
- moderato _____
- _____
- pianissimo _____
- _____

Ear Training

Circle the chord progression below that is played.



Ear Training

Two pentascales will be played in each example. Which one is MAJOR?

- 1. 1st 2nd 2. 1st 2nd 3. 1st 2nd

Ear Training

In each example, your teacher will play two rhythmic patterns. Circle the pattern you hear.




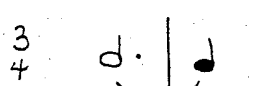
- 1. $\frac{6}{4}$ ♩ ♩ ♩ ♩ | ♩. ♩. or $\frac{6}{4}$ ♩ ♩ ♩ ♩ | ♩. ♩.
- 2. $\frac{4}{4}$ ♩ } ♩ | 0 or $\frac{4}{4}$ ♩. ♩ | 0
- 3. $\frac{3}{4}$ ♩ ♩ ♩ | ♩. or $\frac{3}{4}$ ♩ ♩ ♩ | ♩.

LESSON FIVE

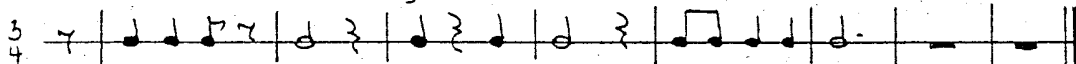
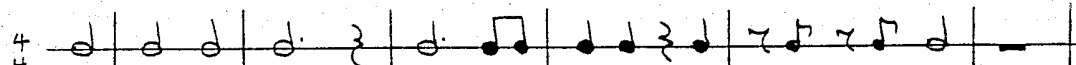
Draw the symbol for each item below.

_____ triplet (eighth notes) _____ dotted half rest
_____ fortissimo _____ pianissimo

Write the number of beats for each pair of tied notes below.

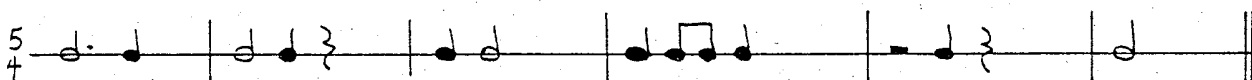
$\frac{6}{4}$ 	$\frac{4}{4}$ 
$\frac{4}{4}$ 	$\frac{3}{4}$ 

Write in the beats (such as 1 2 3 4, etc.) below the given rhythm. Watch the time signatures!

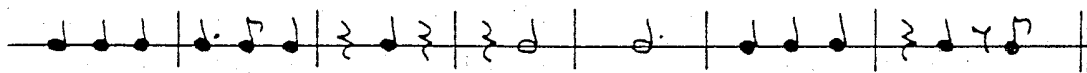
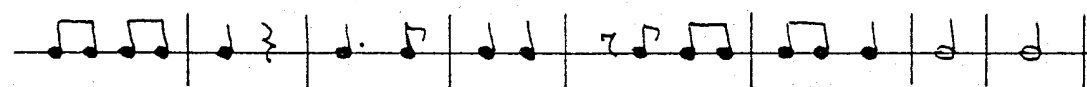
$\frac{3}{4}$ 
$\frac{4}{4}$ 

Each of the measures below is incomplete.

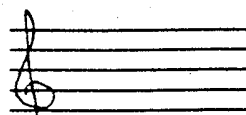
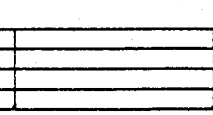
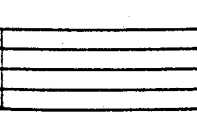
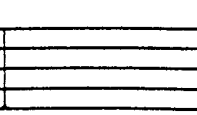
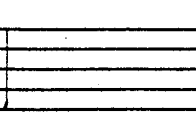
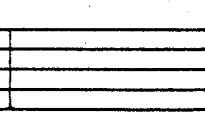
Fill in one note or rest in each measure to make it complete.

$\frac{5}{4}$ 

Add the time signatures to the rhythmic examples below.

Write the correct triads on each staff. Use quarter notes.

					
F minor	G major	C major	F major	C minor	G minor

Identify the chord progressions written on the staves below.
 (C major, F minor, etc.)

What do each of the following musical terms tell you to do?
 Be careful! Their meanings are very similar!

D.C. al Fine _____

D.C. al Coda _____

Identify each interval below (harmonic M3, melodic P1 etc.).

On the staff, write the note that is correct interval below
 the given note.

On the staff below, write 4 sets of triplet eighth notes.
 Be careful with the direction of the stems!

LESSON SIX

Give the letter name of each note on the staff below.
Be sure to watch the clefs!

A musical staff with a bass clef on the left and a treble clef on the right. The staff contains several notes: a whole note on the second line (F) above the bass clef, a whole note on the second space (D) below the bass clef, a whole note on the second space (D) below the bass clef, a whole note on the second line (F) above the bass clef, a whole note on the second space (D) below the bass clef, a whole note on the second line (F) above the treble clef, a whole note on the second space (D) below the treble clef, a whole note on the second space (D) below the treble clef, and a whole note on the second line (F) above the treble clef. Below the staff is a dashed line for writing.

Each of the measures below is incomplete.
Fill in one rest in each measure to make it complete.

A musical staff with a 5/4 time signature. It contains four measures of music. The first measure has five eighth notes. The second measure has a quarter note followed by a blank space. The third measure has a quarter note, two eighth notes, and a blank space. The fourth measure has four eighth notes. The staff ends with a double bar line.

Add the time signatures to the rhythmic examples below.

Two musical staves with rhythmic patterns. The first staff has four measures: a quarter note, a quarter note, a quarter note, a quarter note, a blank space; a quarter note, a quarter note, a quarter note, a quarter note, a quarter note, a quarter note, a quarter note, a quarter note, a blank space; a quarter note, a quarter note, a quarter note, a quarter note, a quarter note, a quarter note, a quarter note, a quarter note, a blank space; and a whole note. The second staff has four measures: a quarter note, a quarter note, a blank space; a quarter note, a quarter note, a quarter note, a quarter note, a quarter note, a quarter note, a quarter note, a quarter note, a blank space; a quarter note, a quarter note, a quarter note, a quarter note, a quarter note, a quarter note, a quarter note, a quarter note, a blank space; and a quarter note, a quarter note, a quarter note, a quarter note, a quarter note, a quarter note, a quarter note, a quarter note, a blank space. Both staves end with a double bar line.




Write the number of beats for each dotted note below.

$\frac{6}{4}$ $\text{d.} =$	$\frac{3}{4}$ $\text{d.} =$
$\frac{4}{4}$ $\text{d.} =$	$\frac{6}{4}$ $\text{d.} =$

On the staff, write the note that is the correct interval above or below the given note.

A musical staff with a treble clef. It contains six measures. The first measure has a whole note on the second line (F) with an arrow pointing down and the label 'P4'. The second measure has a whole note on the second space (D) with an arrow pointing up and the label 'M2'. The third measure has a whole note on the second space (D) with an arrow pointing down and the label 'P4'. The fourth measure has a whole note on the second line (F) with an arrow pointing down and the label 'P5'. The fifth measure has a whole note on the second space (D) with an arrow pointing down and the label 'M3'. The sixth measure has a whole note on the second space (D) with a flat sign and an arrow pointing down and the label 'P4'.

Fill in the blank the term that fits the definition given.

- _____ the rate of speed of a composition
- _____ a composition in two sections
- _____ a happy, fast speed
- _____ a comfortable walking speed
- _____ a moderate (medium) speed
- _____ (), a group of 3 notes to be performed in place of 2 of the same kind. ( = ).
- _____ ABA, song form, minuet and trio, scherzo, rondo, waltz, sonata-allegro (sonata, sonatina, symphony, concerto)

Analysis

Your teacher will give you a short piece to analyse. The piece will be in a three-part form and may include an introduction and a coda.
List the measure numbers for all the sections of the piece.

introduction: measures _____ - _____
section "A": measures _____ - _____
section "B": measures _____ - _____
section "A": measures _____ - _____
coda: measures _____ - _____

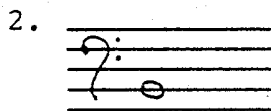
Ear Training

Two pentascales will be played in each example. Which one is MINOR?

1. 1st 2nd 2. 1st 2nd 3. 1st 2nd

Ear Training

In each example, two notes will be played. The 1st note is given. Write a whole note for the 2nd note.



What do each of the following musical terms tell you to do?
 Be careful! Their meanings are very similar!

D.C. al Coda _____

D.S. al Coda _____

Identify the triads written on the staff below.
 (C major, F minor, etc.)

Identify the chord progressions written on the staff below.
 (C major, F minor, etc.)

Write the correct pentascales on the staff below.
 Use half notes.

C minor

G major

F minor

Write the key signatures on the staff below.

C major

G major

F major

F major

G major

C major

Fill in the blank the term that fits the definition given.

_____ a composition in three sections. The third section is an exact (ABA) or varied (ABA') repetition of the first.

_____ closing section of a piece; a few measures added at the end of a piece to give it a more final ending.

_____ the structure/design of a piece.

_____ ff, a dynamic marking indicating to play "very loud."

_____ pp, a dynamic marking indicating to play "very soft."

_____ a triad build in 3rds, with its name on bottom (lowest note)

_____ the fourth degree of the scale.

Ear Training

Is the pentascale that is being played MAJOR or MINOR?

1. major minor 2. major minor 3. major minor

Ear Training

Circle the chord progression below that is played.

1. I V7 I 2. I V7 I 3. I V7 I
or
i V7 i i V7 i i V7 i

Ear Training

For each example, a short musical example will be played.
Do you hear the music crescendo (\langle) or decrescendo (\rangle)?

1. 2. 3.

LESSON SEVEN

Each of the measures below is incomplete.
Fill in one note or rest in each measure to make it complete.

Write the number of beats for each dotted note below.

$$\frac{5}{4} \text{ } \dot{\text{d}} =$$

$$\frac{3}{4} \text{ } \text{d} \cdot =$$

$$\frac{2}{4} \text{ } \text{d} \cdot =$$

$$\frac{6}{4} \text{ } \text{o} \cdot =$$

Identify the pentascales below (G minor, F major, etc.).

Write the correct triads on the staff. Use half notes.

Identify the triads written on the staves below.
 (C major, F minor, etc.)

Identify each interval below (harmonic M3, melodic P1, etc.).

Name the key signatures below.

Write the key signatures on the staff below.

F major C major G major F major C major G major

Below each chord progression, write the correct Roman numerals.

: _____ : _____ :

Write the correct chord progressions in whole notes on the staff below.

C: I V7 I f: i V7 i c: i V7 i



<p>closing section of a piece; a few measures added at the end of a piece to give it a more final ending.</p>	<p>a composition in three sections of which the third is an exact (ABA) or varied (ABA') repetition of the first.</p>
<p>ff, a dynamic marking indicating to play "very loud."</p>	<p>the structure/design of a piece. Examples include binary and ternary form.</p>
<p>a triad build in 3rds, with its name on bottom (lowest note)</p>	<p>pp, a dynamic marking indicating to play "very soft."</p>
<p>the rate of speed of a composition Examples include allegro, andante, and moderato.</p>	<p>the fourth degree of the scale, so called because it is a 5th below the tonic</p>
<p>a happy, fast speed</p>	<p>a composition in two sections</p>

ternary form

coda

form

fortissimo

pianissimo

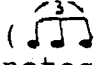
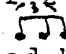
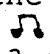
root position triad

subdominant

tempo

binary form

allegro

<p>a moderate (medium) speed</p>	<p>a comfortable walking speed</p>
<p>song form, minuet and trio, scherzo, rondo, waltz, sonata-allegro (sonata, sonatina, symphony, concerto)</p>	<p>() , a group of 3 notes to be performed in place of 2 of the same kind. ( = ). Indicated by a 3 and, usually, a slur</p>

andante

moderato

triplet

ternary form
(types)